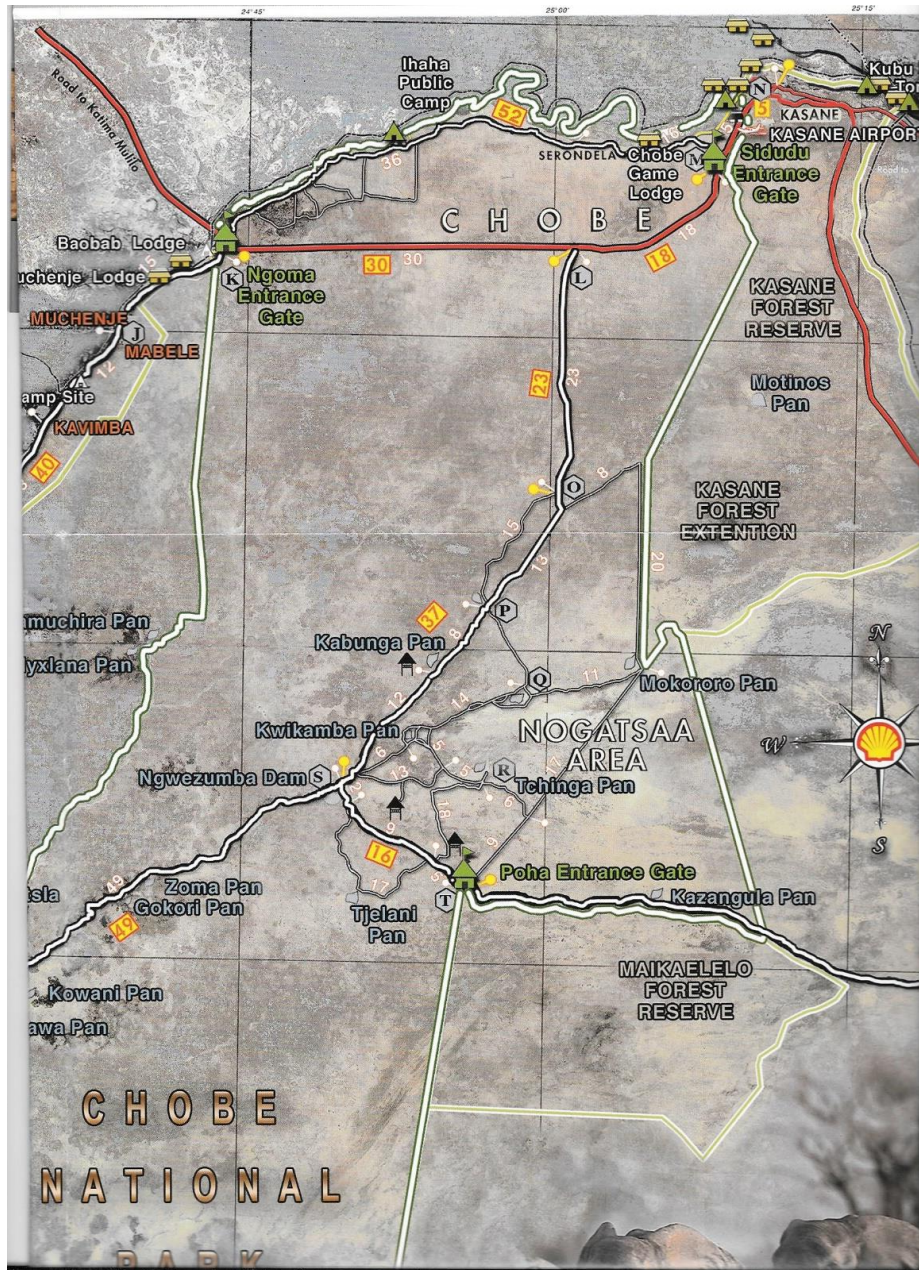




## NOGATSAA PANS CHOBE



Nogatsaa Pans Lodge is approximately 80km from Kasane in the Nogatsaa Area overlooking Kwikamba Pan.

### GPS Co-ordinates for Nogatsaa Pans Lodge

S 18°19'19.45" E 24°53'12.44"

### Directions from Kasane to Lodge

You need 4x4 vehicles to drive from Kasane to Nogatsaa Pans Lodge

From Kasane Airport take A33 towards Sidudu Gate from there travel for 18.5km to Nantanga turnoff - you will find a signboard for Nogatsaa Pans – turn left (GPS Co-ordinates for this point is: S 17°55'19.1" E 025°01'09.4" - L on map) – after turning left travel for 25km until you reach a T-Junction - at T-Junction turn right left. Travel for another 24km where you will reach another signboard for Nogatsaa Pans Lodge – this is at a Mopane tree – turn left – travel another 1.7km – go over crossroads and proceed to Lodge.